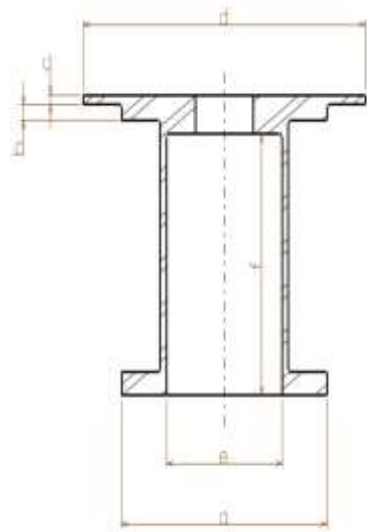


# INSERTS COLD-BONDED



Bobbin and collar insert geometrical parameters



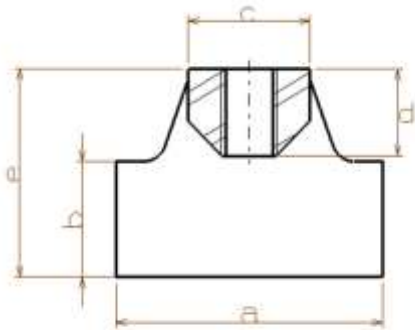
## Materials Used

Insert Material	Surface Finish	Potting Adhesive	Collar Adhesive
Al 7075 T7351 / Al 6063 T6 / Titanium (special)	Alodine / BR127 / Black anodizing (Al 6063 T6)	STYCAST 1090 CAT.9	HYSOL EA 9321

## Cold-Bonded Inserts Characteristics

Type	Blind / Through	Panel Thickness	Heritage	Dimensions			
				a (diameter)	b	c, d *	e, f **
Bobbin	Blind	8	EUI OBS	11	1.5	-	-
		13	ACES	14	2	-	-
		12		11	15	-	-
		12		17.5	2	-	-
		12		MTG	14	1.5	-
	Through	98	Sentinel-5 P	22	3	-	-
		98		25	4	-	-
		40		22	3	-	-
		30		22	3	-	-
		30		27	3		14, 11
		50	ACES	17.5	2		10, 36
		6.2	EUI	11	1.5		
		20	MTG	17.5	1.5		
		20		22	1.5		13, 15.7
		20		26	1.5		17, 15.2
Collar		15	Sentinel-3 SLSTR	17	0.8	0.5, 23	9.9, 7.5

# INSERTS COLD-BONDED



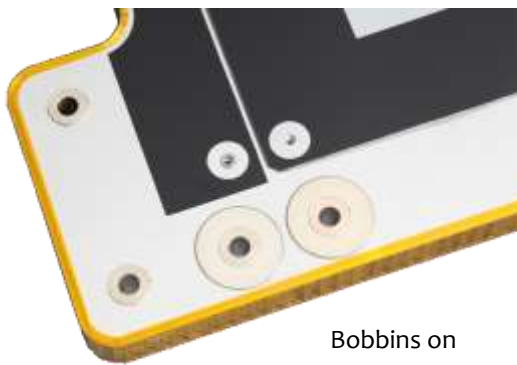
Edge Insert geometrical parameters



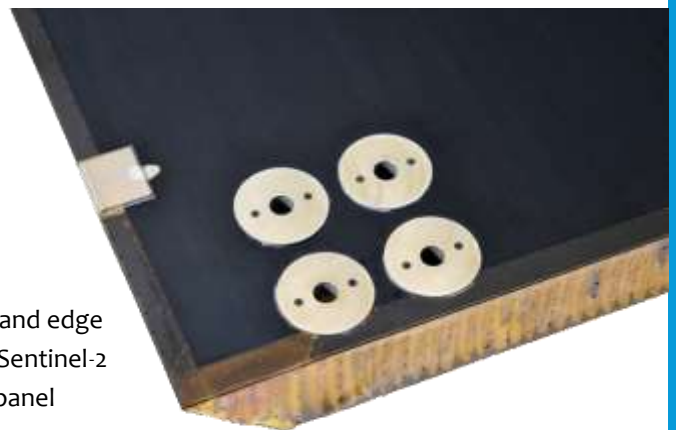
Edge inserts

## Cold-Bonded Inserts Characteristics

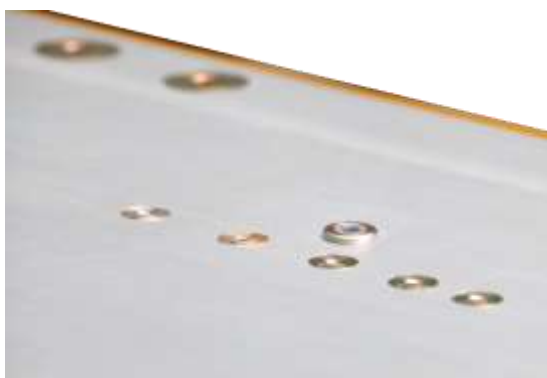
Type	Panel Thickness	Heritage	Flange Thickness	Dimensions				
				a	b	c	d	e
Edge Type 1 (In plane connection)	15	Sentinel-3	1.6	24	10	10	7	19
	25	Sentinel-3	2	25	15	12	8	24
	30	Sentinel-2	1.6	40	20	15	10.9	33.9



Bobbins on Sentinel-5 P panel



Bobbins and edge insert on Sentinel-2 MSI panel



Flat and counterbore bobbins on MTG panel



Bobbins and edge inserts on Sentinel-3 SLSTR RA