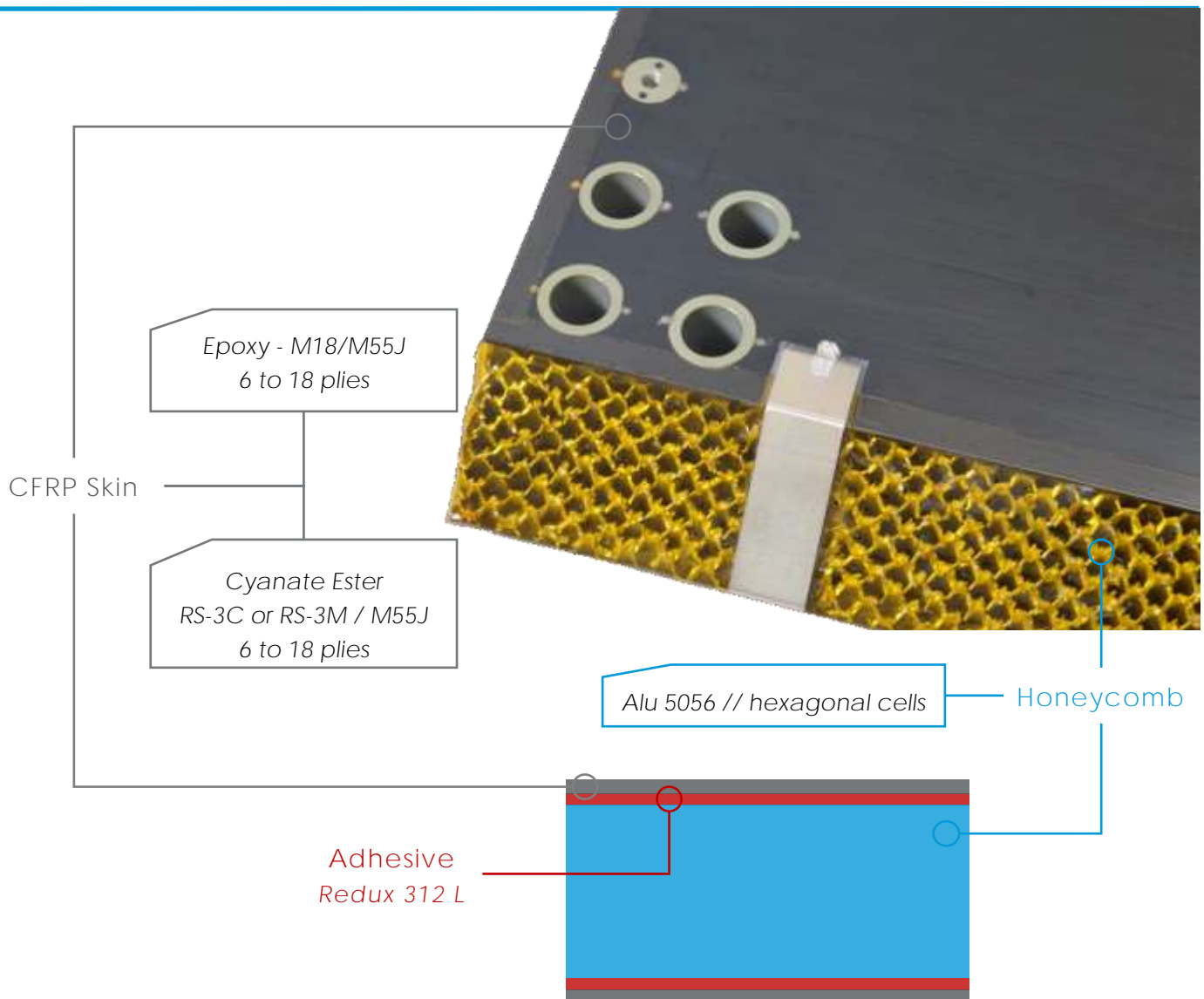


PANELS CFRP / ALUMINUM



CFRP/ALU PANELS

APCO Technologies has been in charge of the manufacturing of several CFRP/Alu S/C structures.

Heritage panel dimensions :

- L x W : 600 x 600 mm to 1695 x 1230 mm
- Thickness : 6 to 80 mm

CFRP Skin Characteristics

System	Material	Nbr of Plies	Thickness (mm)
Epoxy	M18 / M55J	6 to 18	0.6 to 2.0
Cyanate Ester	RS-3C / M55J	6 to 12	0.6 to 1.3
	RS-3M / M55J		

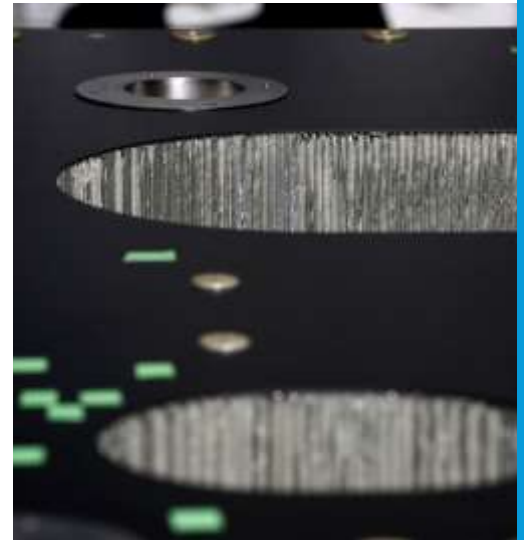
Adhesive Used

Product	Role
Redux 312 L	Adhesive (skin/HC & skin/skin)
Redux 212 NA	Foaming adhesive (HC/HC)

Honeycomb Characteristics

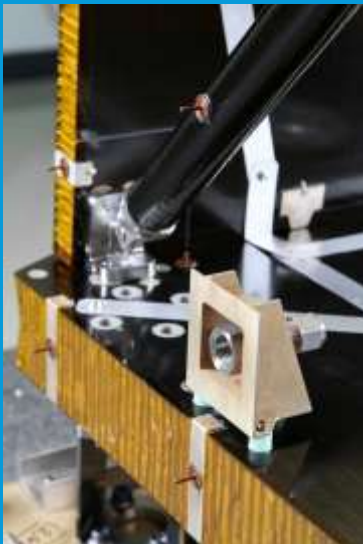
Material	Cell Size (in)	Sheet	Density (lbs/ft ³)
Alu 5056	1/8	0.0015	6.1 (98 kg/m ³)
		0.001	4.5 (72 kg/m ³)
		0.0007	3.1 (50 kg/m ³)
	3/16	0.001	3.1 (50 kg/m ³)
		0.0007	2.0 (32 kg/m ³)

All honeycomb used are compliant with ECSS-E-30-06



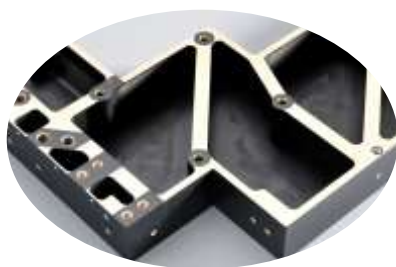
HERITAGE

Sentinel-2 MSI

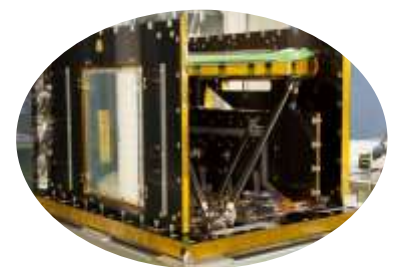


Sentinel-3 OLCI
STCA

EUI OBS



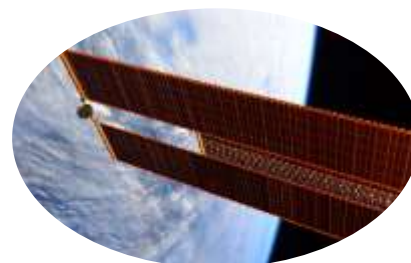
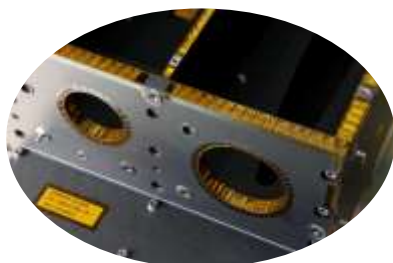
Primary & Secondary
Structures



Equipment
Housing

FUNCTIONAL APPLICATIONS

Optical / Stable
Bench



Solar Array
Structure
Substrates